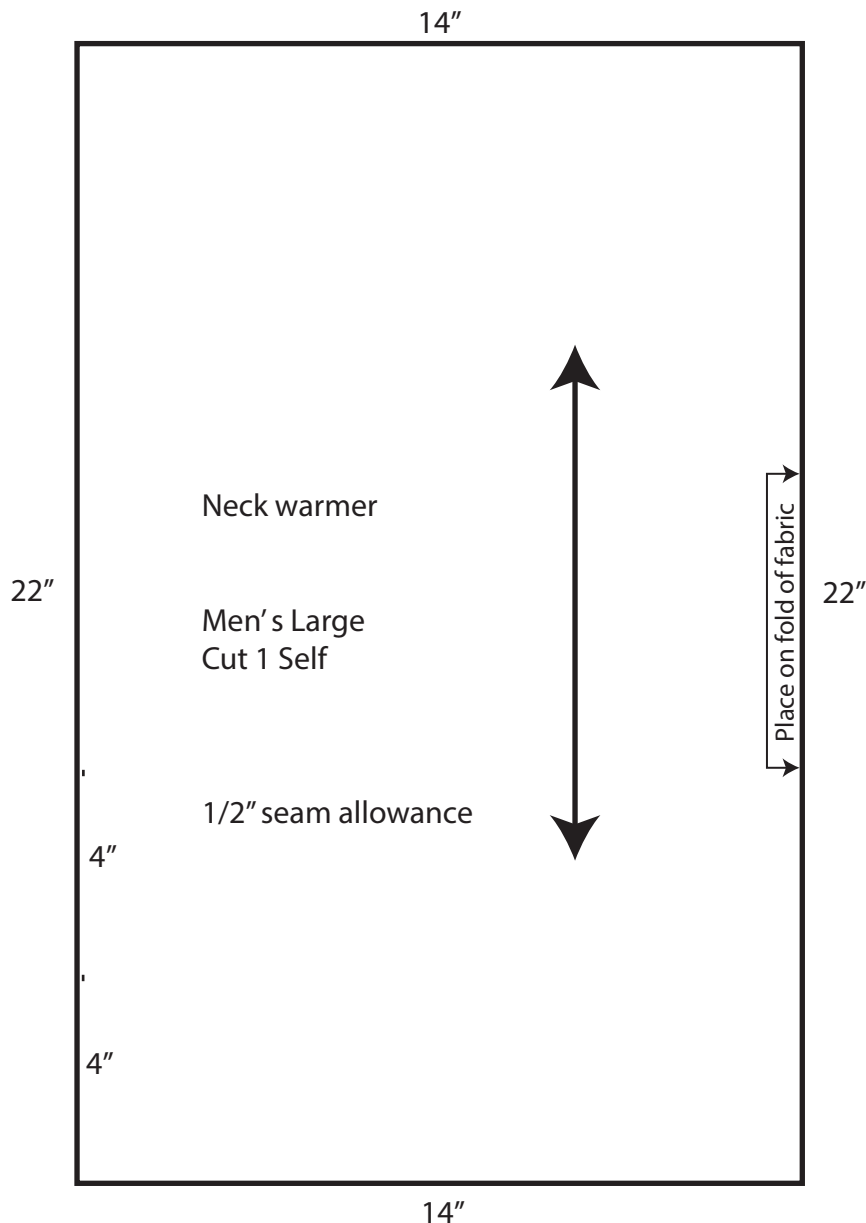


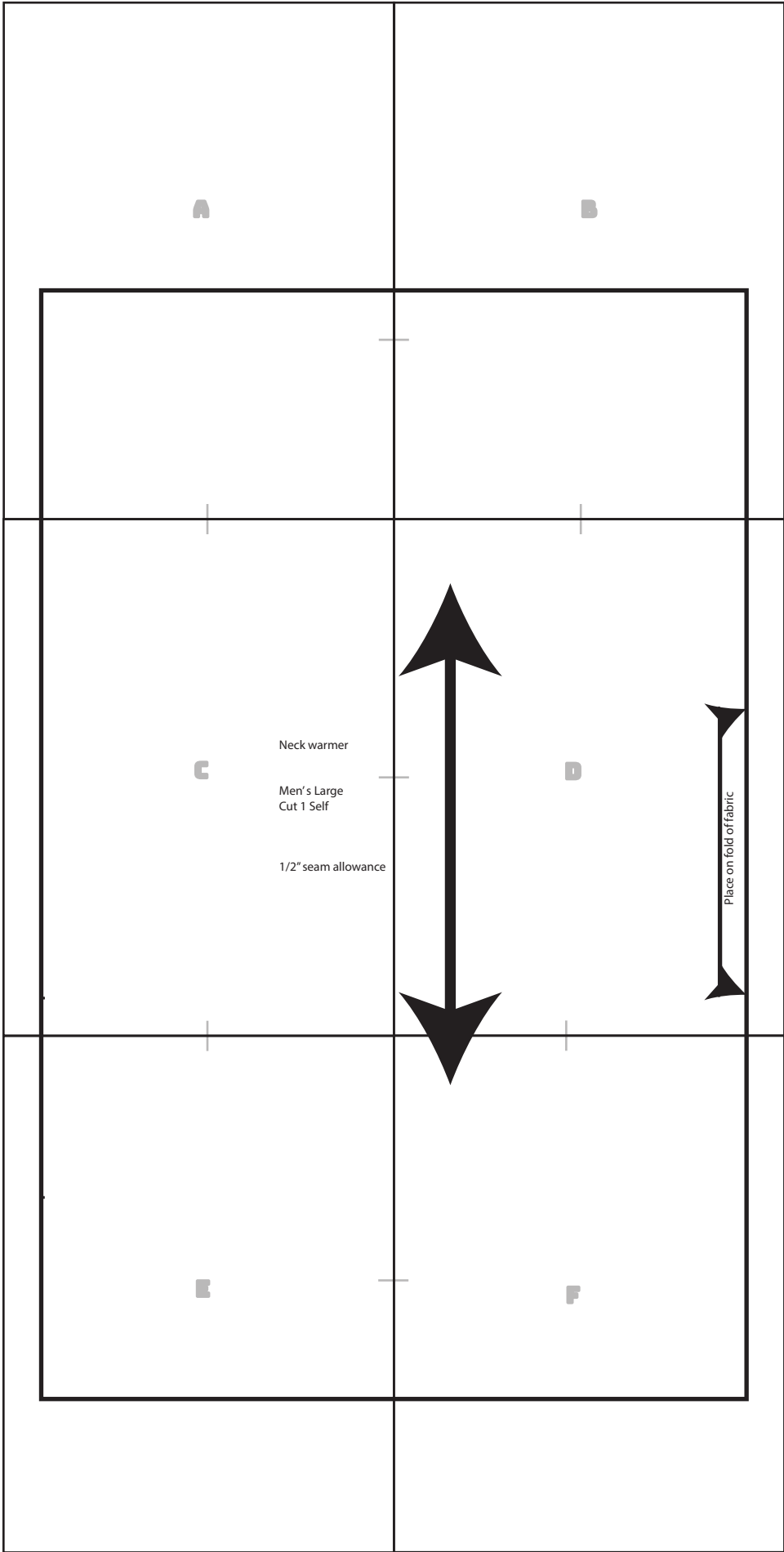
# Neck Warmer Pattern

The neck warmer pattern is one big rectangle that is 22" high and 28" wide total (14" on the fold) as shown below. There are notches on one end along the lengthwise edges, 4" up from the bottom and 4" apart. You can measure this out on your fabric, or you can print the full pattern and put the pages together as shown on the next page.

Cut 1 of the pattern, following the grainline and the side indicated along the fold of the fabric. Mark the notches.

Sew the lengthwise sides together first, leaving the space between the notches open. Fold the wrong sides together so the right side of the fabric is facing out and the widthwise edges are together. Fold the right sides of the seam allowance together along the widthwise direction, and sew together. This needs to be either sewn completely through the opening between the notches, or by sewing as far as you can along the edge before turning and finishing the seam from the opening between the notches. To finish, close the space between the notches, either by hand or with an edge stitch.





A

**B**

C

**Neck warmer**

**Men's Large  
Cut 1 Self**

**1/2" seam allowance**



D



E



F